



THE TERRACE SCHOOL

Marslin Street, Alexandra, Central Otago 9320
Phone/Fax - +64 +3 448 8124
Email - principal@theterrace.school.nz
www.theterrace.school.nz



Text Absences to: 027-448-8409 - Please State full name and reason

Kia Ora Koutou!

Adverse Weather

Well Winter has certainly arrived with the beautiful frosts we have been seeing over the last few days.

We are expecting further freezing temperatures tonight so do remember to keep an eye on our Facebook Page, and our School App for messages regarding any changes to school opening hours. We are guided by the buses as to the safety level for travelling to school in this chilly weather. We will also put any updates on the local radio stations, More FM, The Hits and Radio Central as soon as they come to hand.

This cold leads to an increase in the number of cars here at drop off and pick up times. Please drive to the conditions, and remember our walkways around the school can get quite slick. Keep those windows clear and remember when the kids are rugged up they often have less awareness of what's around them. Please model your "Care & Respect" with your children by observing road rules such as not parking on yellow lines, double parking (even if it's "just for a few seconds") and keeping to the 40kph speed limit.



Parent and Caregiver Contacts

Please do remember to update your contact details (phone numbers, addresses, etc) when these change with Lana and Sue in the office as soon as possible. We have noticed a few emails address and phone numbers have changed. This helps us get in touch with you quickly for any reason.

Please remember if you have a message for students during the school day, these must come through the school office. Teachers don't check their emails during class time as they are teaching, the office will ensure messages are delivered.

NZEI PAID UNION MEETING - Wednesday 20 JUNE 1-3pm

You may be aware that the primary teachers' union, NZEI, is currently negotiating a new collective agreement with the Ministry of Education. Negotiations are not just about pay, but conditions teachers and schools are currently facing with large classes, teacher shortages, lack of support services for children with learning needs, and resourcing to schools. Please click on the link to find out more about this important campaign, which in turn supports our learners.

As part of the negotiation process, the union needs to consult with its members. Union meetings this year have been held after school or, more recently, in staggered meetings during school time, which enabled us to easily manage cover for our teacher absences.

DATES TO REMEMBER:

BOT Meeting 7am	Mon 11 June
PTA Meeting	Mon 11 June
NZEI PUM 1.30pm	Weds 20 June
Rippa Rugby Tournament	Thurs 21 June
BOT Meeting	Mon 25 June
Last Day Term Two	Friday 6 July

"Mā te Kaha - kā ū" - "Satisfaction From Success Through Effort"

CHECKETTS McKAY LAW

Central Otago



NZEI has called a **Paid Union Meeting** for all teachers in Alexandra at **1:30 pm** on **Wednesday 20 June**. Our teachers will need to leave to attend the meeting, therefore regular classes will not be possible that afternoon.

We won't be closing the school for the afternoon but we are asking for your support to assist us in managing our children. If you are able to pick up your child at 12.25pm and keep them home for the afternoon, we would be very grateful. For parents who are unable to collect their children, very limited cover will be available via myself, and support staff. Children will need to be re-grouped for the afternoon, and have an alternative programme.

To assist us with our planning of this afternoon and ensure we have suitable cover could we ask that you email your child's class teacher to confirm pick up or if your child will be joining our regrouped programme. This will be a huge help for our planning. We sincerely thank you in anticipation of your understanding and support!



If you have any questions or concerns about your child's learning or school programmes, please come and talk to your child's class teacher first and foremost. They know your child and their learning the best and we prefer that you talk through the issue in its infancy rather than later down the track.

Mr Mick Enright, and Mrs Andrea Hamilton, our DPs and I are only too happy to help also.

Nga mihi
Sarah Graham
The Terrace Principal



Please be aware that activities advertised in this newsletter have not been assessed by The Terrace School board of trustees. The board advises parents to make their own enquiries to determine whether the activities follow best practice and/or are suitable for their children.

Follow the link to Find:

[Sports Notices & Draws](#)
[Noticeboard](#)



Terrace Netball Club News



Draw for this week

Terrace Green	v	St Gerards Steel	5	1.10
Terrace White	v	Crom Coll Jnr A	4	1.10
Terrace Yellow	v	Maniototo Silver	5	10.00
Terrace Aqua	v	Cromwell Steel	3	10.00
Terrace Lemon	v	APS Tui	6	12.00
Terrace Blue		Maniototo Ferns	6	11.00
Terrace Purple	v	Teviot Tigers	8	11.00
Terrace Purple		APS Pukeko	3	12.00
Terrace Gold	v	Teviot Lions	7	12.00
Terrace Black		Cromwell Superferns	8	12.00

Terrace Aqua Court set up 9.20
Terrace Yellow to supply an umpire 1.10

In case of bad weather cancellations or late starts are posted on the Central Otago Netball Web page or Facebook page.

Friday Lunches:

Sausage in Bread \$1.50 each.

Money in a named envelope with order and placed in appropriate container at office before school. Food will be available outside the staff room at lunchtime on Friday.

Uniform Shop is open Thursday 3.00 – 3.30 p.m. If there is a problem getting to the shop at this time you can make alternative arrangements by ringing the school on 448-8124.

The uniform shop is also open on the first Monday evening of the term 5.30 - 6.00pm. The next date is to be Monday 23 July 2018.

Please make sure all clothing is well named with the wearers name. With swimming and other activities all items need to be identified. If an item is named (with the current owners name) it can be returned to the owner without delay. If an item is not named it will be washed and put away. (You can purchase 'iron on' labels ready printed, \$15 for 50, from the school.)

Residents' invited to take online survey

Central Otago District Council is asking residents to jump online to share their views on Council services and amenities in its 2018 Residents' Survey. Council wants to deliver on the community's expectations. To do this it needs to know what the community currently thinks about the services Council provides, what they are satisfied with and what needs improvement. This online survey is a perfect tool for feeding your thoughts back to Council.

Head to www.surveymonkey.com/r/codc2018.

As a thank you for your time you will go into the draw to win one of five \$50 Prezzy cards. It's quick, easy and important to have your say.

Scholastic Bookclub Issue 4

Orders are due to be completed by Thursday 21st June.

UPDATE: ENTERTAINMENT™ FUNDRAISER

A big thank you to everyone who has supported our Entertainment Fundraiser!

We've almost received all the payments and Books back from our families. If you haven't paid for yours yet can you please organise your payment for the Entertainment™ Book or return your unsold Book to the School office urgently.

If you ordered the Digital Membership please return the Book ASAP.

PAY ONLINE AT: www.entbook.co.nz/2609r59



The Terrace School

Contact: Lana Henderson Phone: 03 448 8124 Email: office@theterrace.school.nz

To order your Book or your Digital Membership online visit: www.entbook.co.nz/2609r59

Alternatively, please complete your details below:

Name: _____ Phone: _____ Email: _____

Address: _____

Dunedin, Invercargill & Queenstown Edition \$60 including GST: # ___ Book(s) # ___ Digital Membership(s)

[] Pick up [] Deliver (Postage: \$8.00) [] I'm paying for a Book sent home with my child. **TOTAL ENCLOSED \$** _____

Payment type: [] Cash [] Mastercard [] Visa Child Name: _____ Child Class: _____

Credit Card number: _____ / _____ / _____ / _____ Expiry date: _____ / _____ CVV*: _____

(Credit Card payments will incur a 1.25% processing fee)

*CVV is the 3 digits on the back of your credit card

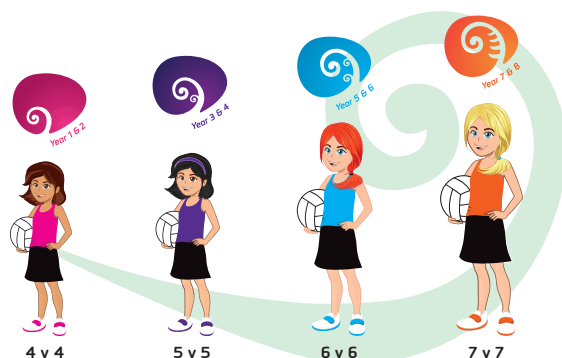
Cardholder's name: _____ Signature: _____

Miniball Draw Friday 8 June

Parent helpers please make sure you are there for the game you are allocated to and assisting where you are asked to.

Thank you.

				Parent Help
3:30pm	TCE Thunder	v	St G Yellow	Mackey
4:20pm	TCE Thrashers	v	Rox Raiders	Takimoana
5:20pm	TCE Tarantulas	v	ALX AIR	Herbert-Nicho
6:00pm	TCE Titans	v	ALX Warriors	Templeton



Mother Earth futureFERNs



Muffin Break PDP

An extension opportunity to develop and extend players technical, tactical and athlete development skills.

Players will learn:

- Physical Skills
- Tactical Development
- Neuromuscular Development
- Stage Specific Strength activities



WHEN:

CONTACT:

PHONE:

REGISTER HERE:

Headlice **FACTS**

Headlice are a common problem all over the world. They are small, flat insects about 2 – 3mm long that breed all year round.

Headlice:

- live on the human scalp – which provides food and warmth for their eggs to hatch
- feed on human blood through the scalp 5 or 6 times a day
- cannot jump, fly or swim
- do not carry disease
- remain on the head after swimming or bathing/showering.

Headlice may cause itching, but do not usually cause disease. Occasionally scalp infections requiring treatment may develop.

Life **CYCLE**

Female lice lay about 7 – 10 eggs each night. Eggs are laid close to the scalp. Each egg is firmly glued to a hair.

The eggs (nits) are small and hard (like a grain of salt) and are normally pale grey in colour. After hatching, the nits (empty egg cases) are white.

Eggs hatch in 9 days and a louse will live for 40 days.

Headlice are sometimes given other names like 'nits', 'kutis', 'kutu bugs' or 'headlouse'.

Looking **FOR** HEADLICE

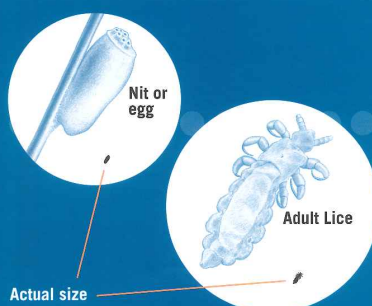
In school age children check for headlice regularly once a week.

Look over the scalp for insects or eggs, especially:

- around the hairline at the back of the neck
- behind the ears
- on the crown.

Use a fine-tooth comb on wet hair to find lice. Scratch marks or a rash can be a sign that your child has headlice. Not all children complain of itchy heads.

Eggs are laid next to the scalp and hair grows about 1cm a month. Therefore any eggs found more than 1cm from the scalp will have hatched and died. You can remove these eggs. You do not need to treat again if treatment is completed.



When **TO** TREAT

- If you find a LIVE insect on the scalp
- If you find eggs within 1 cm of the scalp.

How **TO** TREAT

Speak to your pharmacist/doctor/or practice nurse for advice about what treatment to use and how to use it.

You need a special shampoo or lotion (containing insecticide) available only from your chemist or doctor to kill both the insects and eggs.

Always follow the manufacturer's recommendations supplied with individual treatments. Some treatments are used twice, 7 – 10 days apart.

After using shampoo, dead eggs are left. Treatments and combs will not remove dead eggs. The eggs can each be removed between finger and thumb. Vinegar may help to loosen the glue the eggs are held on with, but will not kill them. Recheck your children's heads after a week and make sure they brush their hair every night.

Wet combing may be effective if done properly. Herbal treatments and remedies may be effective. Talk to the pharmacy, your doctor or public health nurse for advice.

What **DOES** **NOT** WORK

Ordinary shampoo or soap will not kill headlice.

DO **NOT** Use

Flyspray, kerosene or animal remedies, as these may harm children.

TREBLECONE
CHILD LOCALS
SEASON PASSES
**AVAILABLE
NOW**

PRIMARY **\$99**

INTERMEDIATE &
SECONDARY **\$149**

click now to be directed to the website
or email info@treblecone.com

Celebrating Gifted Awareness Week
11th to 17th June 2018

Gifted Awareness
Information
Evening

Monday, 11th June
Room A, Community House
Alexandra

*Assisting gifted children to reach their potential personally
and intellectually – useful for parenting or teaching of any aged gifted child.*

Session One:
4pm—5.30pm.

Session Two:
6pm—7.30pm.

Brought to you by Central Otago REAP

Speakers—Danielle Nicholson and Jen Chamberlain. One Day School Teachers.

Refreshments provided

RSVP by Monday 4th June to mandy@coreap.org.nz or admin@coreap.org.nz

